

## Check for hitchhikers!

### Help Stop the Spotted Lanternfly



Spotted lanternfly (SLF) is an agricultural and nuisance pest that attacks over 100 different plants.

This leafhopper sucks the sap from plants and trees, and adults may gather in large numbers making it unpleasant to be outdoors. It is a strong hitchhiker and will lay eggs on any flat surface, allowing the insect to spread into new areas.



### Check your Vehicles and Gear for SLF

If you have been outside of Vermont, inspect vehicles, firewood, furniture, tools, plants, and other items that have been outdoors for the different life stages of this pest!

#### Egg Masses

September – June



#### Early Nymph (.25-.5")

April – July



#### Late Nymph (.5")

July – September



#### Adults (1")

July – December



## Check for hitchhikers!

### Help Stop the Spotted Lanternfly



Spotted lanternfly (SLF) is an agricultural and nuisance pest that attacks over 100 different plants.

This leafhopper sucks the sap from plants and trees, and adults may gather in large numbers making it unpleasant to be outdoors. It is a strong hitchhiker and will lay eggs on any flat surface, allowing the insect to spread into new areas.



### Check your Vehicles and Gear for SLF

If you have been outside of Vermont, inspect vehicles, firewood, furniture, tools, plants, and other items that have been outdoors for the different life stages of this pest!

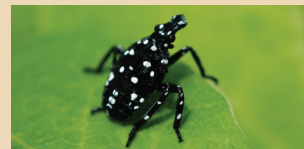
#### Egg Masses

September – June



#### Early Nymph (.25-.5")

April – July



#### Late Nymph (.5")

July – September



#### Adults (1")

July – December



## Check for hitchhikers!

### Help Stop the Spotted Lanternfly



Spotted lanternfly (SLF) is an agricultural and nuisance pest that attacks over 100 different plants.

This leafhopper sucks the sap from plants and trees, and adults may gather in large numbers making it unpleasant to be outdoors. It is a strong hitchhiker and will lay eggs on any flat surface, allowing the insect to spread into new areas.



### Check your Vehicles and Gear for SLF

If you have been outside of Vermont, inspect vehicles, firewood, furniture, tools, plants, and other items that have been outdoors for the different life stages of this pest!

#### Egg Masses

September – June



#### Early Nymph (.25-.5")

April – July



#### Late Nymph (.5")

July – September



#### Adults (1")

July – December



## Where to Check for SLF

SLF is a strong hitchhiker and will lay eggs on any flat surface allowing the insect to spread to new areas. Look for SLF on:

- Vehicles: wheel wells, undersides, roof racks
- Trailers, boats, and hitches
- Tarps
- Camping equipment
- Firewood
- Furniture
- Tools
- Children's toys
- Bicycles
- Grills
- Any items that were stored outdoors



### If you see it, report it!

1. Take a picture of the insect or egg masses.
2. Kill nymphs and adults and scrape egg masses into a bag or container with alcohol or hand sanitizer.
3. Report it to [VTInvasives.org](https://vtinvasives.org) with the location.
4. If you can't take a picture or collect the insect or egg mass, mail specimens to:

**VAAFM Entomologist**  
163 Admin Drive  
Randolph Center, VT 05061



THE UNIVERSITY OF VERMONT  
**EXTENSION**



AGENCY OF AGRICULTURE, FOOD & MARKETS  
DEPARTMENT OF FORESTS, PARKS & RECREATION

All images provided from Penn State Extension.

## Where to Check for SLF

SLF is a strong hitchhiker and will lay eggs on any flat surface allowing the insect to spread to new areas. Look for SLF on:

- Vehicles: wheel wells, undersides, roof racks
- Trailers, boats, and hitches
- Tarps
- Camping equipment
- Firewood
- Furniture
- Tools
- Children's toys
- Bicycles
- Grills
- Any items that were stored outdoors



### If you see it, report it!

1. Take a picture of the insect or egg masses.
2. Kill nymphs and adults and scrape egg masses into a bag or container with alcohol or hand sanitizer.
3. Report it to [VTInvasives.org](https://vtinvasives.org) with the location.
4. If you can't take a picture or collect the insect or egg mass, mail specimens to:

**VAAFM Entomologist**  
163 Admin Drive  
Randolph Center, VT 05061



THE UNIVERSITY OF VERMONT  
**EXTENSION**



AGENCY OF AGRICULTURE, FOOD & MARKETS  
DEPARTMENT OF FORESTS, PARKS & RECREATION

All images provided from Penn State Extension.

## Where to Check for SLF

SLF is a strong hitchhiker and will lay eggs on any flat surface allowing the insect to spread to new areas. Look for SLF on:

- Vehicles: wheel wells, undersides, roof racks
- Trailers, boats, and hitches
- Tarps
- Camping equipment
- Firewood
- Furniture
- Tools
- Children's toys
- Bicycles
- Grills
- Any items that were stored outdoors



### If you see it, report it!

1. Take a picture of the insect or egg masses.
2. Kill nymphs and adults and scrape egg masses into a bag or container with alcohol or hand sanitizer.
3. Report it to [VTInvasives.org](https://vtinvasives.org) with the location.
4. If you can't take a picture or collect the insect or egg mass, mail specimens to:

**VAAFM Entomologist**  
163 Admin Drive  
Randolph Center, VT 05061



THE UNIVERSITY OF VERMONT  
**EXTENSION**



AGENCY OF AGRICULTURE, FOOD & MARKETS  
DEPARTMENT OF FORESTS, PARKS & RECREATION

All images provided from Penn State Extension.